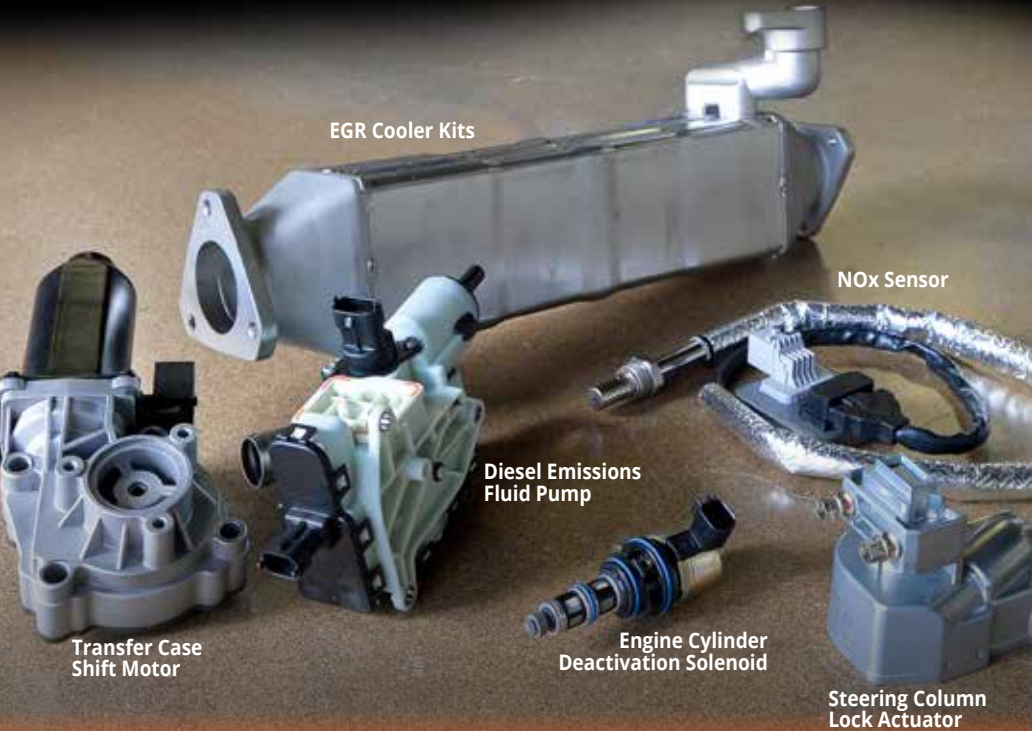




Spring 2017 Service Dealer Guide Volume 1



EGR Cooler Kits

NOx Sensor

Diesel Emissions
Fluid Pump

Transfer Case
Shift Motor

Engine Cylinder
Deactivation Solenoid

Steering Column
Lock Actuator



**DORMAN ENGINEERED SOLUTIONS
DESIGNED TO CORRECT KNOWN OE FAILURE MODES**



When you see this



The image shows two views of an actuator fork. On the left, a hand holds a fork with a broken, short alignment pin, labeled 'Failed Pin'. On the right, a new fork is shown with a longer, extended alignment pin, labeled 'Extended Alignment Pin'. A large orange arrow curves from the top right towards the new part.

OE PROBLEM:
Original actuator fork typically fails due to broken alignment pin and excessive wear on contact pads

OE FIX
Completely redesigned actuator fork, with an extended alignment pin and contact pads, help prevent wear

You Know It's FIXED

Dorman engineered solutions designed to correct known OE failure modes

Part Shown:
4WD Actuator Fork

600-114: Ascender, Bravada, Rainier, Trailblazer, Envoy, 9-7x 2009-02



OVER 70 SKUS AVAILABLE



Air Bag Clocksprings

Relays power to steering wheel functions and air bag

525-031: Buick 2005-04, Chevrolet 2005-02, GMC 2005-02, Oldsmobile 2004-02

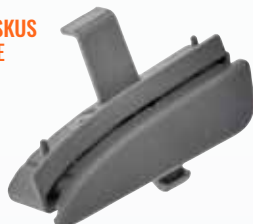
- Restores airbag system to its original performance
- Secure direct-fit connectors are pre-attached; no wire splicing necessary

Failure Mode:

- Over time and regular use, wire ribbons become frayed



OVER 10 SKUS AVAILABLE



OE PROBLEM:

The Dealer's only repair option is the complete replacement of the entire console assembly



Dorman makes it possible to replace the failed latch, saving time, money and labor

Center Console Latches

Secures console lid in closed position

41042: Toyota Tacoma 2012-05



OVER 25 SKUS AVAILABLE

Other Colors Available



Console Lid Kits

Replacement lid for a center console assembly

924-546: Lexus GS300 2005-98, GS400 2000-98, GS430 2005-01

- Complete Kit - Includes all necessary hardware for a complete repair (where applicable)
- Reduce Repair Cost - Replace just the broken lid, instead of the entire console assembly

Cruise Control Switches

Steering wheel mounted cruise control switch assembly

901-399: Ford 2004-98, Mercury 2001-98

- Controls various functions of the cruise control system
- Replacement switch matches the original in look and design



BODY



Door Jamb Switches

Activates cab lights when the vehicle door is opened

901-939: Kia Forte 2013-10, Forte Koup 2013-10, Forte5 2013-12

- Quality tested to ensure trouble-free installation, durability and a longer service life

Failure Mode:

- Internal electrical or mechanical failure, resulting in door jamb switch failing to activate interior lights when car door is opened

OVER 30 SKUS AVAILABLE



Door Latch Assemblies

Controls the vehicle's locks and holds the door shut while driving

940-106: GM Trucks: Express / Savana Van 2016-98; Escalade, Suburban, Tahoe, Yukon 1999-98

- Direct Fit

Failure Mode:

- Mechanical components wear, crack or become frozen into position from corrosion, resulting in vehicle doors not able to open, close or lock properly

DORMAN ASSORTMENT TRAYS



Over 50 Time Saving Tech Trays Available

Visit

DormanProducts.com

Keyword **"Assortment Trays"**
to view our entire collection of Tech Trays



DOOR LOCK ACTUATOR PROGRAM

HIGH GROWTH POTENTIAL

As Integrated Door Lock Actuators become increasingly common in today's new vehicles, Dorman helps keep you ahead of replacement demand through the continuous introduction of new applications.

OVER 530 SKUS AVAILABLE



Door Lock Actuator Motors

Electric motor located inside door latch used to control lock and unlock functions

931-085: Chrysler 2010-08, Dodge 2012-08, Jeep 2015-11, Ram 2015-11

- Dorman has the exclusive coverage needed to stay ahead of replacement demand
- Coverage for today's most in-demand domestic and import vehicles

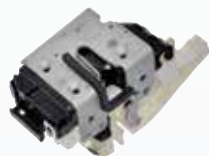
Also Available



746-845
Toyota Highlander 2007-01



931-900
Chrysler, Dodge, Jeep: 2017-11
Cherokee, Dart, Journey, 200, 300



931-901
Chrysler, Dodge, Jeep: 2015-11
Cherokee, Journey, 200, 300



931-902
Chrysler, Dodge, Jeep: 2015-11
Cherokee, Journey, 200, 300



931-903
Chrysler, Dodge, Jeep: 2015-11
Cherokee, Journey, 200, 300

FOR ADDITIONAL INFORMATION PLEASE VISIT US AT:

WWW.DORMANPRODUCTS.COM/IDLASOLUTIONS



BODY



Fuel Filler Door Switches

Remotely operates fuel door lock mechanism

901-927: Kia Sorento 2014-11, 2009

- Restores the ability to release the fuel door



Also Available

901-590:

Volkswagen Beetle 2010-98



Failure Mode:

- Internal electrical or mechanical failure, resulting in fuel door not opening



Hood Latch Assemblies

Keeps the vehicle's hood closed

820-200: GM Trucks: Silverado, Sierra, Suburban, Tahoe, Yukon, Escalade 2014-07; Impala 2016-06

- Exclusive design consolidates two OE SKUs into one unique Dorman part
- Durable steel construction features protective coating for added corrosion resistance

Also Available

820-201:

GM Trucks: Silverado/Sierra 2002-99;
Suburban, Tahoe,
Yukon, Escalade 2006-00



Failure Mode:

- Original latch will wear or corrode resulting in latch becoming inoperable

OVER 25 SKUS AVAILABLE



Located in trunk of vehicle



Liftgate Lock Actuators

Electric motor that opens, locks and unlocks the vehicle liftgate

746-262: Chrysler, Dodge Journey & Minivan 2010-08; Jeep Liberty 2010-09

- High-quality electric motor
- Direct replacement for a proper fit every time

Failure Mode:

- Original electrical motor wears out over time resulting in inoperable liftgate



Liftgate Pull Handle

Handle to close liftgate

926-810: Dodge Durango 2015-11, Jeep Cherokee 2015-14

- Made to stand up to everyday use and general wear and tear
- Application-specific, matching overall aesthetic design of the original handle



Failure Mode:

- Cracked plastic or loose original liftgate handle, resulting in handle no longer able to aid in opening the liftgate

OVER 15 SKUS AVAILABLE

**DORMAN 2017
GROWTH
CATEGORY**



Located under hood



Power Steering Reservoirs

Provides power steering fluid to the pump

603-024: Audi TT 2006-97; Volkswagen Jetta, Golf 2010-99

- Premium plastic construction to withstand the effects of heat & vibration generated within the engine compartment
- Includes reservoir cap and level sensor (where applicable)



Also Available

523-058:

GM full size pickups & SUVs 2007-99



Radiator Mount Brackets

Mounts radiator to vehicle frame

523-057: GM full size pickups & SUVs 2007-99

- In-demand replacement due to rust prone original part
- Includes all hardware necessary for a complete repair

Failure Mode:

- Rust and corrosion results in clunking noise from mounting area



BODY

OVER 25 SKUS AVAILABLE



Spare Tire Hoists

Holds spare tire in place underneath the vehicle

924-538: Dodge Ram 2500/3500 2010-06,
Ram 2500/3500 2012-11

- Coated finish to prevent rust and corrosion
- Includes mounting hardware for a complete repair (where applicable)



Steering Column Shift Mechanism

Enables driver to shift smoothly in and out of desired gear

905-120: GM Trucks: Express, Savana Vans 2014-03;
Silverado, Suburban, Tahoe, Yukon 2006-99

Failure Mode:

- Wear and fatigue from normal use results in the inability to shift into gears properly



Sun Visors

Blocks harsh rays of the sun, protecting driver's eyes from glare

74486: GM Express & Savana Vans 2015-03

- Designed to match the original, maintaining your vehicle's overall interior look
- Mounting hardware included for a complete repair (where applicable)

Also Available
74438: Honda Civic 2008-06



Also Available
74439: Honda Civic 2011-09



Failure Mode:

- Original hinges wear out or crack, resulting in sagging or damaged sun visor, improperly aligned against vehicle headliner



OE PROBLEM:

A worn bracket leads to failure, however OE only offers replacement of entire assembly



Dorman has engineered all new components, upgraded to stronger aluminium parts

Sun Visor Repair Kits

Repairs a sagging or drooping sun visor

924-531: Jeep Wrangler 2002-98



OVER 20 SKUS AVAILABLE



Also Available

950-000: Chrysler, Dodge Town and Country 2010-08



Tailgate Lock Actuator Motors

Electric motor that remotely opens, locks and unlocks vehicle tailgates

746-755: Honda Fit 2008-07

- Quality tested to meet product standards and quality

Failure Mode:

- Original electric motor wears out, resulting in lock becoming inoperable



Also Available

924-423: Ford Ranger 1997-90



Truck Cab Mount Kits

Bracket used to mount the truck's cab body to the vehicle frame

924-420: Ford Ranger 1997-86

- Includes all necessary components for a complete repair
- Replacement bracket eliminates vibration and helps protect against potential damage to truck cab

Failure Mode:

- Original mounts fail over time due to cracks and corrosion, leading to loose truck body on vehicle frame

OVER 20 SKUS AVAILABLE



Located in trunk of vehicle



Trunk Lock Actuator Motors

Controls the remote locking and unlocking of the vehicle trunk

746-405: Volkswagen Beetle 2010-98, Jetta 2004-99, Cabrio 2002-99

- Housing material protects motor from damage, ensuring a longer service life
- Integrated with a high-quality electric motor

Failure Mode:

- Inability to remotely lock and unlock vehicle trunk



BODY



WASHER FLUID PROGRAM



Washer Fluid Reservoirs

Provides fluid to the windshield washer system

603-182: Chrysler 300 2010-08, Dodge Challenger 2010-08, Charger 2010-08, Magnum 2008-05

- Built with thicker, more durable plastic to withstand the expansion and cracking from severe temperature fluctuations
- Reduce repair time, all windshield reservoirs include:
 - Reservoir cap, level sensor and pump (where applicable)
 - Mounting bracket (where applicable)

Failure Mode:

- Collision damage, road debris that can puncture the bottle, or cracked or missing cap results in leaking washer fluid

Over 100 Washer Fluid SKUs Available



603-014

Nissan Altima 2013-07,
Maxima 2013-08



603-052

Chevrolet Malibu 2008-04



603-071

Honda Fit 2008-07



603-196

Toyota Sienna 2015-04



603-198

Chrysler PT Cruiser 2010-01



603-273

Volkswagen Golf 2001-99



603-322

Mazda 6 2008-05



603-575

Dodge Ram Pickup
2010-06



603-588

Ford Freestyle 2007-05



603-590

Chrysler 200 2014-11,
Sebring 2007,
Dodge Avenger 2014-10



603-593

Chrysler Town & Country 2010-08,
Chrysler Voyager 2008,
Dodge Grand Caravan 2010-08



603-647

Audi A3 2010-06,
Volkswagen Eos 2010-07,
Jetta 2007-05,
Rabbit 2009-06



OVER 200 SKUS AVAILABLE



Also Available

42869:
Mercedes-Benz 2012-06



Windshield Wiper Arms

Connects the wiper transmission to windshield wiper blade

42874: Cadillac CTS 2014-10, SRX 2016-10

- Designed with upgraded spring to maintain better wiper blade contact with windshield to avoid streaking (where applicable)

Failure Mode:

- The original wiper arm fails due to damage incurred during automated car washes and snow and ice removal

OVER 285 SKUS AVAILABLE



Located behind the cowl



Windshield Wiper Linkages

Provides mechanical connection between the wiper motor and wiper blades

602-364: Saab 9-3 2011-05

- Built with upgraded bushing material for a longer service life
- Easy to install, direct-fit replacement

Failure Mode:

- Original plastic bushing fails over time resulting in inoperable wiper blades

Also Available



602-025

Nissan Altima 2013-07,
Nissan Maxima 2015-09



602-105

Jeep Wrangler 2015-07



602-144

Jeep Compass 2015-07



602-145

Jeep Patriot 2015-07



602-212

Chevrolet HHR 2011-06



602-325

Ford Escape 2012-07,
Mercury Mariner 2011-07



BRAKE



**OVER 35 SKUS
AVAILABLE**



Brake Dust Shields

Protects vehicle wheel from brake dust build up, keeping the braking system clean

924-654: Chevrolet 2010-06, GMC 2010-06

- Manufactured with a rust resistant coating for a longer service life and extra protection against debris and other contaminants
- Two part construction saves hub disassembly time

Failure Mode:

- Visible rust and corrosion, resulting in rattling noise from brake area of vehicle and excessive brake dust in engine bay



Brake Light Switch

Illuminates vehicle brake lights when the brake pedal is pressed

901-0004: GM T500, T6500, T7500, T8500 Truck 2009-97; Isuzu Truck FSR, FTR, FVR 2009-97

- Designed for long-lasting durability against harsh road and weather conditions



Also Available

603-645:

Audi A4, A6 2005-02;
Volkswagen Passat 2001-97

Brake Master Cylinder Reservoirs

Stores reserve hydraulic fluid for the braking system

603-642: Audi A4, S4, A6 2005-02; Audi 80, 90, 100, 5000 Series 1995-84; Volkswagen Passat 2001-97

- Reduce Repair Cost - replace the worn original brake reservoir, instead of the entire master cylinder assembly
- Includes reservoir cap

Failure Mode:

- Cracking/fracturing due to extreme temperatures, road debris, resulting in loss of brake fluid, reduced braking power or complete loss of braking



OVER 15 SKUS AVAILABLE



Also Available

924-180: Chevrolet S10 2004-94,
GMC Sonoma 2004-94



Body Mounts

Secures frame or subframe to vehicle body and dampens road noise and vibration

924-041: Buick 2007-04, Chevrolet 2009-02, GMC 2009-02, Oldsmobile 2004-02

- All necessary bushings and hardware are included for a complete repair (where applicable)
- Constructed of quality material to resist compression, cracking and separating

OVER 5 SKUS AVAILABLE



Located behind the dust cover



Jounce Bumpers

Prevents damage to the vehicle's control arm, frame, shock mount and other suspension components

523-258: Dodge 2010-08, Jeep 2016-07, Ram 2015-11

- Replacement eliminates clunking and knocking noises associated with a failed jounce bumper
- Made of polystyrene foam for long-lasting durability

OVER 15 SKUS AVAILABLE



Also Available

924-402: Chevrolet 2000-88,
GMC 2000-88



Shock Mounts

Bracket used to mount the shock or strut to inside fender well

523-054: Ford F Super Duty 1993-90, F-250 1993-87, F-350 1993, F350 1992-85

- Mounting hardware included for a complete repair (where applicable)
 - Built with upgraded bushings for long-lasting resistance to wear and tear
- Failure Mode:**
- Rust, corrosion and deterioration from resulting in unstable suspension



CHASSIS



Steering Shafts

Restores proper rotation to vehicle steering wheel

425-105: Chevrolet Colorado 2012-04, GMC Canyon 2012-04, Hummer H3 2010-06, H3T 2010-09

- U-joints use precision engineered needle bearings for smooth operation
- Easy to install - no special tools needed

Failure Mode:

- Loose steering and/or complete inability to steer vehicle properly

Over 50 Steering Shaft SKUs Available



425-107

GM Minivans: Montana, Silhouette, Trans Sport, Venture 2005-97



425-159

GM Express & Savana Vans 2002-96



425-259

Dodge Dakota 2000-97, Durango 2000-99



425-284

Jeep Cherokee 1994-84, Comanche 1992-86, Wagoneer 1990-84



Located behind driver side wheel behind cover



Steering Shaft Universal Joint

Restores proper steering function

425-367: Ford F150, F250, F350 1996-92, Windstar 2003-97

- Pre-assembled, with high-quality bearings and forged end fittings for strength and durability
- Effectively eliminates clunking and binding

Failure Mode:

- Failure results in a clunking sound, binding of steering shaft and an inability to steer properly

OVER 30 SKUS AVAILABLE



Suspension Knuckle Bushings

Bushing used as the mounting point between the knuckle and suspension arms or link

523-241: Cadillac CTS 2015-08

- Reduce Repair Cost - replace the failed bushings, instead of the entire steering knuckle assembly
- This direct-replacement restores a smooth ride, directional stability and agile handling

Failure Mode:

- Rubber deterioration over time resulting in clunking noise from suspension area



Also Available

523-286: Cadillac CTS 2007-03,
Cadillac SRX 2009-04



Suspension Shock / Strut Mount Bushing

Upper mounting point for the strut or shock

523-220: Cadillac SRX 2009-04

- Available separately, enabling replacement of just the failed bushing instead of the entire control arm assembly

Failure Mode:

- The original bushing rubber deteriorates over time, resulting in knocking and clunking noise from vehicle suspension

OVER 50 SKUS AVAILABLE



Suspension Trailing Arm Bushings

Connects trailing arm to vehicle frame

523-246: Ford Fusion 2012-06, Lincoln MKZ 2012-07, Lincoln Zephyr 2006, Mercury Milan 2011-06

- Reduce Repair Cost - replace the worn bushing, instead of the entire trailing arm assembly, saving you time and money

Failure Mode:

- The original bushing rubber deteriorates over time, resulting in knocking and clunking noise from vehicle suspension



MEDIUM DUTY

A GROWING CATEGORY OF

TOW TRUCKS

LANDSCAPERS

CABLE / TV SERVICE

Freightliner

OVER 35 SKUS



Coolant Reservoir
603-5207: M2 2016-12



Radiator Grille
242-5208: M2 2015-03



International

OVER 80 SKUS



Coolant Reservoir
603-5104: 3000, 4000, 7000,
8000 Series; IC School Bus w/DT466
Engine 2007-06



EGR Valve
904-5056: 1000, 3000, 4000, 7000
Series; IC School Bus w/DT466 &
MaxxForce DT Engines 2010-07



Ford

OVER 550 SKUS



EGR Cooler
904-262: 6.0L V8 Engine 2010-04



Fuel Injector Control Module
904-229: 6.0L V8 Engine 2010-04





OVER 1,600 SKUS IDEAL FOR:

UTILITY COMPANIES

MUNICIPALITIES

REFUSE TRUCKS

Chevrolet

OVER 700 SKUS



Roof Marker Light

69995: C4500, C5500, C6500, C7500, C8500 Kodiak 2009-05



Transfer Case Motor

600-909: C4500, C5500 Kodiak; RPO Code NP1 (Electronic Shift, 2 Speed Case); NP263 Case; w/3 Position Selector Switch 2009-05



Isuzu

OVER 240 SKUS



Throttle Body Position Sensor

977-000: NPR, NPR-HD w/ 6.0L V8 2007-03



Engine Oil Dipstick Tube

917-303: NPR, NPR-HD w/6.0L Gas Eng 2003



Hino

OVER 55 SKUS



Coolant Reservoir

603-5751: 165, 185, 238, 258LP, 268, 338, Dutro, FD, 145, 258ALP, 268A, 338CT, 358, 308 2010-05



Headlight Assembly

888-5759 [R] & 888-5760 [L]: 258ALP, 258LP, 268, 268A, 338, 338CT, 145, 165, 185 2014-06





DIESEL



Diesel Emissions Fluid (DEF) Module

Supplies fluid to the diesel exhaust pipe

599-995: Ram 3500/ 4500/ 5500 2012-11

- 100% new providing upgraded internal electronic components
- Upgraded internal electronic components withstand temperature swings caused by extreme heat and cold



Diesel Emissions Fluid (DEF) Pump

Supplies fluid to the SCR module

904-367: Chevrolet 2016-10, GMC 2016-10

- Mounting hardware included for a complete repair
- Plug and play design for an easy installation

OVER 15 SKUS AVAILABLE



EGR Cooler Kits

100% new, not remanufactured - no core charge

904-5031: International 2010-08

- Cools recirculating exhaust gas
- Material upgraded to stainless steel to prevent corrosion



Also Available

904-5032: International 2010-08



OVER 40 SKUS AVAILABLE



EGR Tubes

Routes exhaust gases into the intake manifold

598-157: Ford Expedition 2004-03, F-150 2003-02, F-150 Heritage 2004

- Modified flex point reduces the possibility of damage due to heat and vibration
- Stainless steel construction protects against stress, fractures, corrosion and blockage from carbon build-up



Also Available

598-160: Ford Taurus 2002-00, Mercury Sable 2002-00



Fuel Line Disconnect Tools

Unlocks fuel fittings from fuel line

904-484: GM Trucks with diesel eng. 2016-11

- Durable plastic construction for a long service life



Fuel Pump Strainer

Filters debris on bottom of fuel tank

904-419: Ford Trucks with diesel eng. 2008-90

Failure Mode:

- Clogged fuel filters and injectors, results in poor running conditions and loss of power



NOx (Nitrogen Oxide) Sensor

Detects nitrogen oxide levels in the vehicle's exhaust system

904-6029: Ram 2500 2016-14, 3500 2016-15, 4500/ 5500 2016

- Anti-seize coating pre-applied to prevent damage to sensor from high engine temperatures
- Required to pass state emissions

Also Available

904-6030:

Ram 2500/ 3500/ 4500/ 5500
2016-13



Failure Mode:

- Debris and contamination causes failure
- Illumination of the check engine light and vehicle going into limp mode

LIVE CUSTOMER SERVICE & TECH SUPPORT AVAILABLE!



Online

www.DormanProducts.com



Email

[techlinemarketing@
dormanproducts.com](mailto:techlinemarketing@dormanproducts.com)



Phone

1-866-933-2911

HOURS: MON-THU 8AM-7PM EST; FRI 8AM-5PM EST



DRIVETRAIN

OVER 80 SKUS AVAILABLE



Auto Trans Oil Coolers

Cools transmission fluid to ensure consistent transmission operation

918-262: Nissan Rogue 2013-08, Rogue Select 2015-14

- Coated for high corrosion resistance and increased protection against the elements
- Durable aluminum construction for a long-lasting service life

Failure Mode:

- Collision, road debris & corrosion results in cooler leaks & transmission overheating

OVER 295 SKUS AVAILABLE



Also Available

624-906: Chrysler Concorde/ Intrepid 2004-98, Dodge Intrepid 2004-98, Jeep Liberty 2006-05

Auto Trans Oil Cooler Hose Assemblies

Transfers fluid from engine to radiator

624-891: Dodge Ram 2500/3500 2009-06

- Hose material upgraded to metal and rubber to resist corrosion (where applicable)
- Leak-resistant design helps prevent common problem of transmission fluid loss

Failure Mode:

- Rubber deteriorates over time and metal tubes rust or corrode leading to transmission fluid leaks



Differential Lock Sensor

Signals driver of differential lock activation

600-251: Jeep Wrangler 2016-07

- Easily plugs into mating component

Failure Mode:

- Lock sensor light fails to illuminate on instrument cluster



Differential Lock Sensor Connector

Supplies voltage to the differential lock sensor

600-250: Jeep Wrangler 2016-07

Failure Mode:

- Connector fails to supply voltage to lock sensor



OVER 5 SKUS AVAILABLE



Differential Mounts

Mounts differential to vehicle suspension

523-240: Cadillac 2016-07, Chevrolet 2016-07, GMC 2016-07

- Upgraded bushings for added durability and a longer service life
- Direct replacement ensures a proper fit every time



Differential Mount Bushings

Mounts differential to vehicle

523-071: Cadillac 2016-07, Chevrolet 2016-07, GMC 2016-07

- Includes necessary mounting hardware for a complete repair
- Replacement eliminates knocking and clunking noise from vehicle differential



Drive Belt Idler Pulley Adjustment Bolt Kits

Maintains belt tension

917-148: Lexus 2007-93, Toyota 2008-95

- Includes necessary components for a complete adjuster repair
- Very large Toyota VIO makes this an in-demand service item

Also Available

917-124: Subaru Forester 2007-02, Impreza 2007-01, Legacy 2009-00



Failure Mode:

- Corrosion or threads seize on original idler bolt, resulting in the inability to service engine belt

OVER 25 SKUS AVAILABLE



Drive Shaft Center Support Bearings

Serves as a mounting point on chassis for two or three piece driveshafts

934-766: Lexus NX200t 2015, Lexus NX300h 2015, Toyota RAV4 2015-06

- Reduce Repair Cost - replace the failed original center support bearing, instead of the entire driveshaft assembly
- Mounting bracket included for a complete repair



Failure Mode:

- Corrosion or rubber degrades around bearing, resulting in squeaking or rattling of driveshaft



DRIVETRAIN

OVER 15 SKUS AVAILABLE



Shift Interlock Solenoids

Keeps vehicle from shifting out of park until the brake pedal is depressed

924-976: Cadillac 2006-02, Chevrolet 2016-98, GMC 2016-98, Oldsmobile 2001-98

- Extremely high original failure rate makes this part in-demand for over 12 million GM vehicles on the road today
- Direct replacement ensures a proper fit every time

Failure Mode:

- Original shifter fails to actuate internal short circuit, resulting in the inability to shift vehicle out of park

Also Available



924-974

Ford Explorer 2005-02,
Mercury Mountaineer 2005-02



924-975

Buick 2009-97, Cadillac 2000-99,
Chevrolet 2016-95, GMC 2005-95,
Oldsmobile 2004-96, Pontiac 2005-97



924-981

Chevrolet 2007-04, Pontiac 2006-05

OVER 35 SKUS AVAILABLE



Transfer Case Motors

Engages four wheel drive

600-932: BMW X3 2010-04, X5 2006-04

- Engineered for long-lasting durability against harsh road and weather conditions, including water intrusion
- Motor is sealed for corrosion-resistance

Also Available

600-933: BMW 2010-06



Failure Mode:

- Water intrusion causes rust damage, resulting in inoperable four-wheel drive (4WD) system



Direct replacement eliminates the need to retrofit or wire

Backup Camera

Captures image behind vehicle when in reverse, eliminating blind zones

590-075: Kia Sorento 2013-11, 2009

- Upgraded camera lens provides a wider angle
- Mounting bracket included to assist with installation

OVER 5 SKUS AVAILABLE



Battery Fuses

Protects electrical circuits from overload

924-082: Infiniti 2015-04, Nissan 2015-04

- Restores proper operation to electronic accessories throughout the vehicle
- Easy to install - no special tools required

OVER 240 SKUS AVAILABLE



Door Window Switches

Driver and passenger side switch to adjust vehicle power window

901-197: Chevrolet 2002-01, GMC 2002-01

- Designed to match the exact fit, form and function of the original switch
- Easy plug-and-play installation, no programming required



Failure Mode:

- Electrical or mechanical failure of internal components, resulting in the inability to operate power windows



Electronic Throttle Body Module

Controls the throttle body by opening and closing the throttle plate through signals that are sent from the accelerator pedal

599-959: Nissan Altima 2010-07, Maxima 2009

- Completely remanufactured from high-quality materials for increased durability and quality assurance
- Upgraded internal electronic components withstand fluctuating temperatures caused by extreme heat and cold

OVER 15 SKUS AVAILABLE



High Intensity Discharge Control Ballasts

Regulates electrical voltage to the vehicle headlights

601-092: Lexus LS430 2006-04, Toyota Prius 2005-04, Sienna 2010-04

- Direct-fit wiring harness - no wire splicing necessary



OVER 70 SKUS AVAILABLE



HVAC Control Modules

Controls a variety of climate control settings

599-204: Chrysler 200 2014-11, Sebring 2010, Dodge Avenger 2014-10

- Ready to Install - Plug and play design requires no programming
- Fully Remanufactured and Tested - Includes backlight replacement bulbs and O-rings (where applicable)

OVER 40 SKUS AVAILABLE



Parking Aid Sensors

Alerts drivers to close-proximity objects

684-000: Volvo XC90 2014-07

- Sensor is sealed to prevent moisture and debris from entering unit
- Comes with matching connectors and fully compatible electronics for a complete repair (where applicable)

Original Unit



*Patent pending programming tool

UPGRADED GEAR MATERIAL



Steering Column Lock Actuator

Receives signal from ECU and smart remote to unlock vehicle steering wheel

601-037: Nissan Altima 2010-07, Maxima 2009

OE PROBLEM:

Weak internal gears frequently cause original unit to fail, resulting in a 'no start' situation



Dorman's design uses stronger gears to eliminate the original failure mode

OVER 15 SKUS AVAILABLE



Transfer Case Control Modules

Shifts vehicle in and out of 4WD

599-252: Cadillac 2005-03, Chevrolet 2005-03, GMC 2005-03, Hummer 2007-03

- Completely remanufactured and tested for quality assurance
- Plug and play for easy installation - no programming required

OVER 10 SKUS AVAILABLE



Transmission Control Modules

Restores your vehicle's ability to shift in and out of gear

599-120: GM 2013-05, Isuzu 2008-06

- Completely remanufactured and vehicle simulator tested for durability and quality assurance
- Contains all new gaskets, grommets and seals



VVT SOLUTIONS PROGRAM

MARKET LEADING COVERAGE

Dorman's VVT program provides the Aftermarket's most comprehensive coverage for over 196 million installation opportunities.

OVER 175 SKUS AVAILABLE



Engine Variable Timing Solenoids

Activates variable valve timing by controlling air flow and pressure

917-241: BMW 2013-06, 2001-00

- 100% Tested - All Engine Variable Timing Solenoids go through vehicle simulator testing for quality assurance
- Complete Kit - Includes all gaskets needed for a complete repair (where applicable)



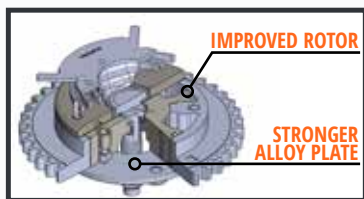
Engine Cylinder Deactivation Solenoid

Also Known As Multiple Displacement Solenoid

916-511: Chrysler 2009-05, Dodge 2009-05, Jeep 2009-05

- Made of high quality materials for increased durability and a longer service life
- OE part is highly prone to failure

OVER 25 SKUS AVAILABLE



OE PROBLEM:

The original sprocket wears leading to poor engine performance



Dorman's new rotor design reduces friction and provides smoother engagement for a longer service life; and improves overall performance

Engine Variable Timing Sprockets

Adjusts camshaft timing for optimal engine performance and efficiency

917-250XD: Ford 2011-04, Lincoln 2011-05, Mercury 2010-06

Additional Camshaft Phasers Also Available



917-270:

Buick 2013-10, Chevrolet 2012-06, GMC 2010, Pontiac 2010-06, Saturn 2010-06



917-298:

Buick 2011-09, Buick 2007-06, Chevrolet 2011-06, Pontiac 2010-06, Saturn 2009-06



ENGINE



OE PROBLEM:

The only OE Dealer repair option offered is the complete replacement of the entire assembly



Dorman offers a replacement for the failed valve, avoiding the need to replace the entire assembly - saving shop time and money

Engine Oil Filter Bypass Valve

Maintains continuous flow of filtered oil in the vehicle engine

917-992: Chrysler 2013-11, Dodge 2013-11, Jeep 2013-11, Ram 2013-12

OVER 30 SKUS AVAILABLE



Engine Valve Covers

Protects valve train components and seals oil flow

264-907: Volkswagen Beetle, Golf, Jetta, Passat 2015-05 w/2.5L Eng.

- Built-in PCV diaphragm helps to prevent oil leaks and sludge build up on engine
- Constructed of durable materials to withstand warping, cracking and porousness

OVER 420 SKUS AVAILABLE



Exhaust Manifold Kits

Channels exhaust gas away from engine and through exhaust system

674-257: Dodge Durango 2015-11, Jeep Grand Cherokee 2015-11

- Complete Kit - Includes all necessary gaskets and hardware



OE PROBLEM:

Broken studs require time-consuming drilling and re-tapping to remove. In some cases, the entire cylinder head must be removed to extract broken studs



Dorman's Exhaust Manifold Clamp eliminates the need to remove failed original studs by applying clamping pressure to eliminate exhaust leaks

Exhaust Manifold to Cylinder Head Repair Clamps

Seals leaking manifold

917-499: Ford Trucks 1997-88 with 7.5L Eng.



OE PROBLEM:

When original Sensor fails, the Dealer only offers a complete replacement of both the hose and sensor assembly



Dorman's replacement Sensor saves money by enabling the replacement of only the failed original part

Fuel Pressure Sensors

Part of the EVAP system that monitors fuel tank pressure levels

911-260: Ford 2014-00, Lincoln 2009-07, Mercury 2010-02

OVER 20 SKUS AVAILABLE



Secondary Air Injection Pumps

Injects fresh air into the exhaust system to reduce emissions

306-025: BMW X5 2003-01

- Quality tested to meet the fit, function and endurance of the original pump

OVER 20 SKUS AVAILABLE



Secondary Air Injection Check Valves

Prevents exhaust backflow from damaging the air pump

911-167: Ford Fusion 2009-06, Mercury Milan 2009-06

- Fully tested to ensure trouble-free installation and durability
- Replacement restores system performance and efficiency

OVER 15 SKUS AVAILABLE



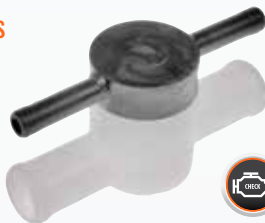
Vacuum Pumps

Provides vacuum source for brake booster

904-817: Audi 2013-12, Volkswagen 2014-06

- Re-engineered radial ball bearing provides greater load capacity for improved durability (where applicable)
- Includes mounting grommets (where applicable)

OVER 5 SKUS AVAILABLE



Vapor Canister Vent Valves

Seals the EVAP system during leak detection tests

911-839: Hyundai Sonata 2005-99, XG300 2001, XG350 2005-02; Kia Optima 2006-01

- Built with thicker, upgraded housing material to better protect the solenoid



HEATING & COOLING

**OVER 75 SKUS
AVAILABLE**



AC Bypass Pulleys

Replaces seized air conditioning compressor to restore vehicle function without shortening belt

34245: Acura MDX 2002-01, Honda Odyssey 2004-99, Pilot 2004-03

- Mounting bracket included for a complete repair
- Eliminate the need to install a completely new A/C compressor

**OVER 10 SKUS
AVAILABLE**



Engine Coolant Pipes

Transfers coolant from the radiator to the engine block

902-697: Ford Thunderbird 2005-02, Lincoln LS 2006-00

- Includes O-ring for a complete repair
- Durable plastic construction to withstand harsh underhood conditions

**OVER 300 SKUS
AVAILABLE**



Engine Coolant Reservoirs

Provides coolant to the engine

603-078: Chevrolet 2016-03, GMC 2016-03

- Redesigned with a more durable plastic construction to withstand the effects of stress generated within the engine compartment
- Includes cap, drain tube and sensor (where applicable)



Failure Mode:

- Collision damage and cracking results in loss of coolant and overheating

Also Available



603-487

Dodge Ram 1500 2003-02,
Ram 2500/ 3500 2003



603-565

Toyota RAV4 2016-06



603-644

Mercedes-Benz 300CE/ 300E/ 300TE 1993



603-650

Volvo C30 2013-07, C70 2013-06,
S40 2012-04, V50 2011-05



603-812

Mercedes-Benz 2002-96



603-5219

Freightliner FLD 132/ 120/ 120SD 2004-02



OVER 70 SKUS
AVAILABLE



OE PROBLEM:

Original Y-connectors are made of plastic and frequently leak due to cracking



Dorman upgraded the Y-connector material to aluminum for increased durability and a longer service life

HVAC Heater Hose Assemblies

Ensures proper coolant circulation

626-561: Dodge Journey 2010-09

- Includes clamps and/or fittings for a complete repair (where applicable)
- Reduce Repair Cost - Replace the failed hose, instead of the entire heater hose assembly, saving time, money and labor



HVAC Blower Fan Switch

Controls fan speeds of the vehicle HVAC system

901-940: Mazda MPV 1998-97, Protege 2003-01

Failure Mode:

- Internal electrical or mechanical failure resulting in the inability to adjust cabin temperature

OVER 240 SKUS
AVAILABLE



HVAC Heater Blend Door Actuators

Electronic motor controlling the blend door that adjusts interior temperatures

604-049: Chrysler 2016-14, Dodge 2016-14, Ram 2015-14

- Re-engineered with upgraded motor and internal material for improved durability and performance (where applicable)

OVER 15 SKUS AVAILABLE



Power Steering Coolers

Cools the vehicle's power steering system

918-302: Chevrolet 2016-03, GMC 2016-03

- Coated for extra protection against corrosion for increased durability and a longer service life
- Hoses and clamps included for a complete repair (where applicable)

Also Available

918-303: Chevrolet 2002-88,
GMC 2002-88



Failure Mode:

- Road debris damage, cracks in brazing, connector failure, collision damage, rust results in power steering system overheating and external leaks



Did You Know?

Industry experts believe that by the year 2020, one in five vehicles sold worldwide will be powered by a hybrid powertrain

OVER 10 SKUS AVAILABLE



OE PROBLEM:

The original bus bars quickly corrode, leading to electrical failure



Dorman's design uses plated bus bars to reduce corrosion

Hybrid Battery Packs

Includes modules (such as ECU) - no need to reuse from the old battery

587-015: Toyota Prius C 2014-12

- Completely remanufactured and tested
- Each unit and individual cell is tested to confirm optimal battery pack performance

Also Available



587-016: Lexus ES300h 2013, Toyota Avalon 2014-13, Camry 2014-12



587-030: Lexus RX400h 2007-06, Toyota Highlander 2007-06



FREE NEW PRODUCT ALERTS!

BE THE FIRST TO KNOW!



ABOUT FORMERLY "DEALER ONLY" PARTS

HUNDREDS OF EXCLUSIVE NEW PARTS DELIVERED TO YOUR EMAIL EVERY MONTH!

SIGN UP TODAY!

[VISIT DORMANPRODUCTS.COM/SIGNUP](http://DORMANPRODUCTS.COM/SIGNUP)



OVER 150 SKUS AVAILABLE



Steel Wheels

Mounts tire to wheel hub

939-189: Ford F-450, F-550 Super Duty 2004-99

- Comprehensive program of direct-fit replacement wheels
- Fully compatible with original wheel covers and all TPMS sensors



Failure Mode:

- Curb and pothole damage, rust or collision damage results in wheel vibration or loss of air pressure

Also Available



939-165:

Chrysler 2007-01, Dodge 2007-01



939-175:

Buick 1998-90, Chevrolet 2005-87, Oldsmobile 1998-89, Pontiac 2005-87



939-178:

Chevrolet 2005-97, Oldsmobile 2004-97, Pontiac 2005-99

BODY



OVER 20 SKUS AVAILABLE



Power Steering Return Hoses

Transfers power steering fluid

979-108: Toyota Camry 2006-02, Solara 2008-04

- Bracket included for a complete repair
- Zinc plated for long-lasting corrosion resistance (where applicable)



Also Available

979-170: Toyota Camry 2011-07



Also Available

979-0038: Honda Civic 2005-02



PEEL & STICK

ON MONITOR OR TOOL BOX



Think It's Dealer Only?

DORMAN®

Dorman Products, Inc. | 3400 East Walnut Street | Colmar, PA 18915 • Corporate Office and Customer Service: 1-800-523-2492 • New Product Idea Hotline: 1-800-336-3575
©2017 No reproduction in whole or in part without prior written approval.

SDG2017v1 2017001

